

1-10DPS75

Shot blasting machine

Technical data	
Working width	254mm
Blasting capacity	up to 130m ² /h on concrete
Motor:	7,5kW / 230V - 50Hz or 60Hz / 16A - Three phase - 5 pole 7,5kW / 400V - 50Hz or 60Hz / 16A - Three phase - 5 pole
Weight	211 kg
Dimensions L / W / H	1590mm / 400mm / 1020mm
Drive system / speed	Electric / 0.5 - 30 m/min
Push / Pull machine	Pull
Abrasive consumption	10 - 75 gr/m ²
Surface	Steel / Concrete / Stone / Asphalt

Options



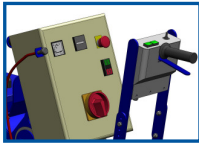
BDC-3140P

Options / Accessories	
Dustcollector	BDC-3140P
Abrasive S330 / S390	999-0330 / 999-0390
10m suction hose Ø76	005014
Magnetic broom R600	001238
Maintenance kit	E06361
Personal safety features	On request / See manual

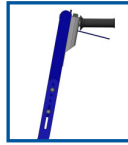


Magnetic broom

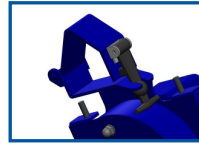
The innovators in surface preparation!!!!



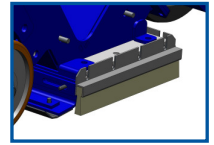
Drive control system on steer



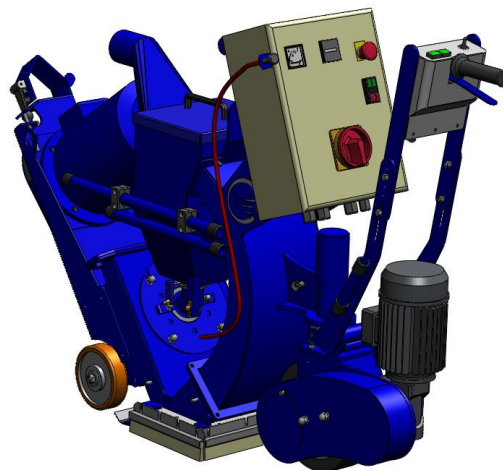
Height adjustable steer



Hose clamp



Magnet sealing with brushes



Main assets

- ❖ Closed circuit which is dust free, when connected to an appropriate Blastrac dust collector.
- ❖ Highly versatile machine, appropriate for many jobsite sizes.
- ❖ High quality and performance.
- ❖ Reliable machine provided with latest technology.
- ❖ Ergonomic design and user's friendly control panel.
- ❖ Easy to transport, handle and use.
- ❖ Can be used for floor preparation / renovation / maintenance and decorative purposes.