

1-10DS / Global

Shot blasting machine

Technical data	
Working width	254mm
Blasting capacity	up to 200m ² /h on concrete
Motor:	11kW / 400V - 50Hz or 60Hz / 32A - Three phase - 5 pole
Weight	325 kg
Dimensions L / W / H	1880mm / 400mm / 1060mm
Drive system / speed	Electric / 0.5 - 25 m/min
Push / Pull machine	Pull
Abrasive consumption	10 - 75 gr/m ²
Surface	Steel / Concrete / Stone / Asphalt

Options



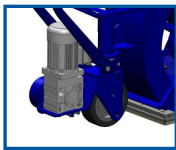
BDC-655



Magnetic broom

Options / Accessories	
Dustcollector	BDC-655
Abrasive S330 / S390 / S460	999-0330 / 999-0390 / 999-0460
15m suction hose Ø127	492019
Magnetic broom R600	001238
Maintenance kit	E03187
Personal safety features	On request / See manual

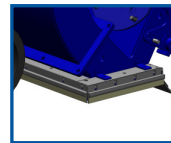
The innovators in surface preparation!!!!



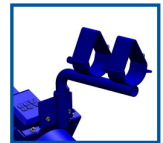
Quick lift system



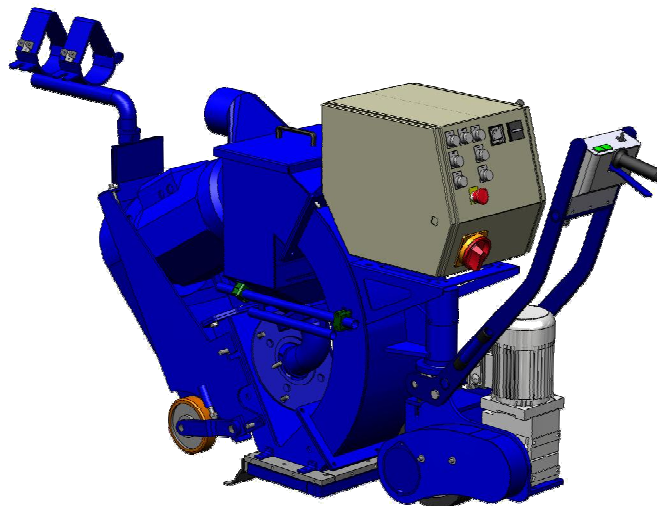
Height adjustable control panel



Magnet sealing with brushes



Hose clamp



Main assets

- ❖ Closed circuit which is dust free, when connected to an appropriate Blastrac dust collector.
- ❖ Highly versatile machine, appropriate for many jobsite sizes.
- ❖ High quality and strong fabrication.
- ❖ Reliable machine provided with latest technology.
- ❖ Ergonomic design and user's friendly control panel.
- ❖ Easy to transport, handle and use.
- ❖ Can be used for floor preparation / renovation / maintenance and decorative purposes.