

Technical data	
Working width	203mm
Blasting capacity	up to 20m ² /h on concrete
Motor	2,4kW / 110V - 50Hz / 16A / Single phase 2,4kW / 230V - 50Hz / 16A / Single phase
Weight	48 kg
Dimensions L / W / H	1040mm / 310mm / 980mm
Drive system / speed	Manual / N/A
Push / Pull machine	Push
Abrasive consumption	5 - 75 gr/m ²
Surface	Steel / Concrete / Stone

Options



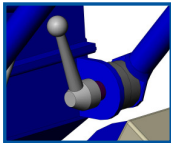
BDC-1220



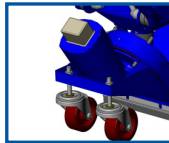
Magnetic sweeper

Options / Accessories	
Dustcollector	BDC-1220 / BDC-1330
Abrasive S330 / S390	999-0330 / 999-0390
10m suction hose Ø51	004583
Magnetic sweeper	489538
Maintenance kit	001631
Personal safety features	On request / See manual

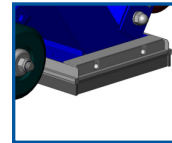
The innovators in surface preparation!!!!



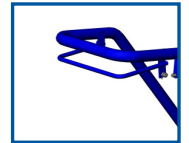
Adjustable steer



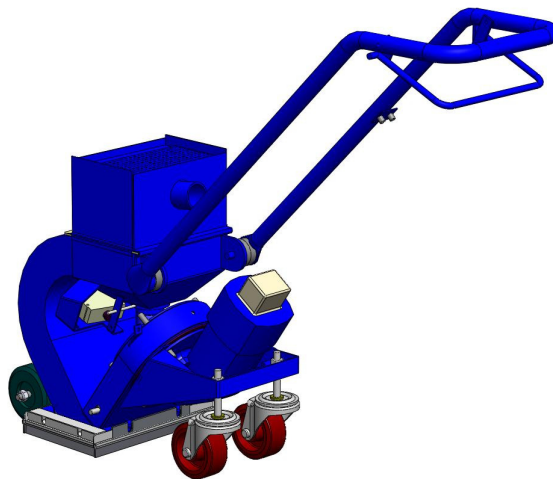
Easy to maneuver



Magnet sealing with brushes



User friendly steer



Main assets

- ❖ Closed circuit which is dust free, when connected to an appropriate Blastrac dust collector.
- ❖ Universal unit: can be connected to a standard electrical plug (230V / 110V).
- ❖ Can blast 50mm along walls and edges.
- ❖ The smallest operator walk-behind shot blaster.
- ❖ Easy to transport, handle and use.
- ❖ Lightweight machine.
- ❖ Reliable machine, suitable for rental.
- ❖ Can be used for floor preparation / renovation / maintenance and decorative purposes.