

1-8DPF40

Shot blasting machine

Technical data	
Working width	203mm
Blasting capacity	up to 70m ² /h on concrete
Motor	4,0kW / 400V - 50Hz or 60Hz / 16A - three phase - 5 pole
Weight	122 kg
Dimensions L / W / H	1100 mm / 370mm / 1030mm
Drive system / speed	Electric / 0.5 - 23 m/min
Push / Pull machine	Push
Abrasive consumption	10 - 75 gr/m ²
Surface	Steel / Concrete / Stone / Asphalt

Options



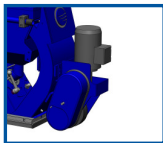
BDC-317

Options / Accessories	
Dustcollector	BDC-1330 / BDC-317 / BDC-317P / BDC-3140
Abrasive S330 / S390	999-0330 / 999-0390
10m suction hose Ø76	005014
Magnetic broom R600	001238
Maintenance kit	E07050 (50Hz) / E07051 (60Hz)
Personal safety features	On request / See manual

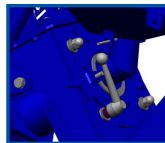


Magnetic broom

The innovators in surface preparation!!!!



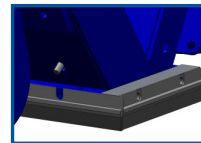
Electric drive unit



Easy adjust system for cage



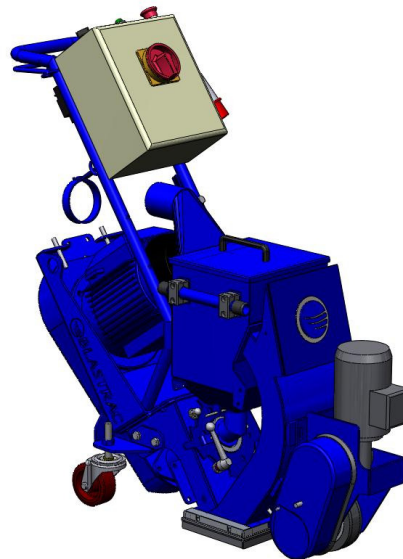
Walk behind machine



Magnet sealing with brushes



Hose guide



Main assets

- ❖ Closed circuit which is dust free, when connected to an appropriate Blastrac dust collector.
- ❖ Easy operating (walk behind).
- ❖ Can work very close to corners.
- ❖ Ergonomic design and user's friendly control panel.
- ❖ Reliable machine, suitable for rental.
- ❖ Easy to transport, handle and use.
- ❖ Can be used for floor preparation / renovation / maintenance and decorative purposes.